



2<sup>nd</sup> Pennsylvania Breeding Bird Atlas  
 Powdermill Nature Reserve  
 1847 Route 381  
 Rector, PA 15677

Place  
 Stamp  
 Here



2<sup>nd</sup> Pennsylvania Breeding Bird Atlas logo (artwork by Larry Barth) left to right: Scarlet Tanager, N. Saw-whet Owl, Ruffed Grouse, Black-crowned Night Heron, Common Raven, Eastern Bluebird

## 2<sup>nd</sup> Pennsylvania Breeding Bird Atlas 2004-2008 Monitoring Pennsylvanian Biodiversity!

Eastern Bluebird (photo by Bob Mulvihill)



### WHAT is a breeding bird atlas?

A breeding bird atlas is a grid-based survey of the nesting birds of any area. The first Pennsylvania Breeding Bird Atlas (PBBA) was completed during 1984-1989. More than 2,000 volunteer bird watchers listed the breeding birds found in each of 4,928 10-square mile Atlas blocks covering Pennsylvania. The result was a set of detailed maps showing the distribution of all the state's nesting birds. With help from many more volunteers (perhaps 10,000 or more!), the 2<sup>nd</sup> PBBA will show changes in the occurrence and distribution of the state's nesting birds, plus much more.

### WHEN and WHERE is the atlas?

The 2<sup>nd</sup> PBBA is happening from 2004-2008. Birds show breeding behavior almost year round, but especially in the months of May, June, and July. And birds are everywhere! While you are boating or fishing, look for Great Blue Herons, Ospreys, or Belted Kingfishers. Hiking in the forest, you may see a Scarlet Tanager or hear a drumming Ruffed Grouse. Farms and fields are home to Eastern Bluebird, Barn Swallow, and Killdeer. Wild Turkey and several kinds of hawks are even becoming adapted to life in and around cities.



Scarlet Tanager (photo by Bob Mulvihill)

## WHO can help?

Are you or someone you know one of the estimated 2.7 million bird watchers in Pennsylvania? Young or old, casual “backyard” bird watcher or avid birder, just beginning or with a lifetime of experience, everyone is welcomed and encouraged to take part in the 2<sup>nd</sup> PBBA, the most extensive survey of the state’s nesting birds ever attempted. Even if you haven’t watched birds before now, there is plenty of time to learn how to observe and identify them during the five-year 2<sup>nd</sup> PBBA and to help us Monitor Pennsylvanian Biodiversity!



Juvenile Eastern Screech Owl (photo by Bob Mulvihill)

## HOW you can help

From a single record of a robin nesting on your porch post, to a handful of observations of birds seen at a state park while on your family’s summer vacation, to a long list of nesting species you’ve compiled after having spent dozens of hours watching birds in many different habitats in several Atlas blocks—**every single participant and every single record adds value and importance to the project.** So, if you observe and report a nesting bird, your observation might literally put another of Pennsylvania’s breeding birds on the map, and all records will contribute measurably to the success of the 2<sup>nd</sup> PBBA.



Killdeer chick (photo by Mike Lanzone)

**For more information, contact**  
Bob Mulvihill, Project Coordinator

Powdermill Nature Reserve  
1847 Route 381  
Rector, PA 15677  
(724) 593-6022  
Mulvihill@pabirdatlas.org

Or visit our website

[www.pabirdatlas.org](http://www.pabirdatlas.org)

### Sponsors of the 2<sup>nd</sup> PBBA

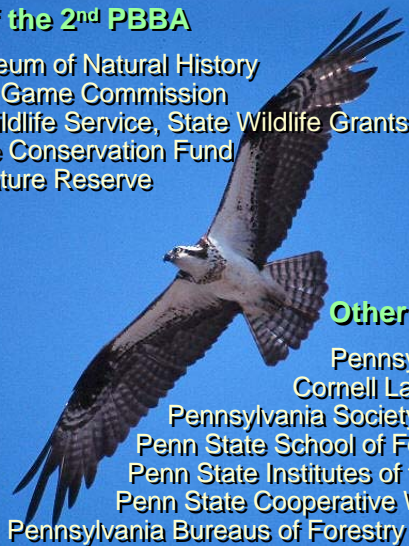
Carnegie Museum of Natural History  
Pennsylvania Game Commission  
U.S. Fish & Wildlife Service, State Wildlife Grants Program  
Wild Resource Conservation Fund  
Powdermill Nature Reserve

### Other Support from

Pennsylvania Audubon  
Cornell Lab of Ornithology  
Pennsylvania Society for Ornithology  
Penn State School of Forest Resources  
Penn State Institutes of the Environment  
Penn State Cooperative Wetlands Center  
Pennsylvania Bureaus of Forestry and State Parks



Ruby-throated Hummingbird (photo by Mike Lanzone)



Osprey (photo by Mike Lanzone)

(Tear off and mail with your check)

# Yes, I’d like to make a tax deductible contribution to the 2<sup>nd</sup> PBBA!

For contributions of \$25 or more, we will send you a complimentary 2<sup>nd</sup> PBBA t-shirt (with a full color Atlas logo like the front of this brochure)

Name \_\_\_\_\_

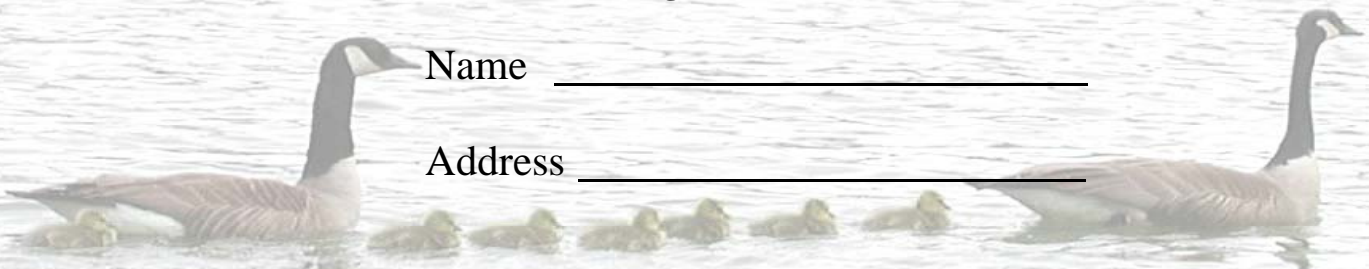
Address \_\_\_\_\_

Donation: \$ \_\_\_\_\_

T-shirt size: \_\_\_\_\_  
(S,M,L,XL,XXL)

Check payable to: Carnegie Museum of Natural History

Send to: 2<sup>nd</sup> PBBA, 1847 Route 381, Rector, PA 15677



Canada Goose family (photo by Adrienne Leppold)